

13

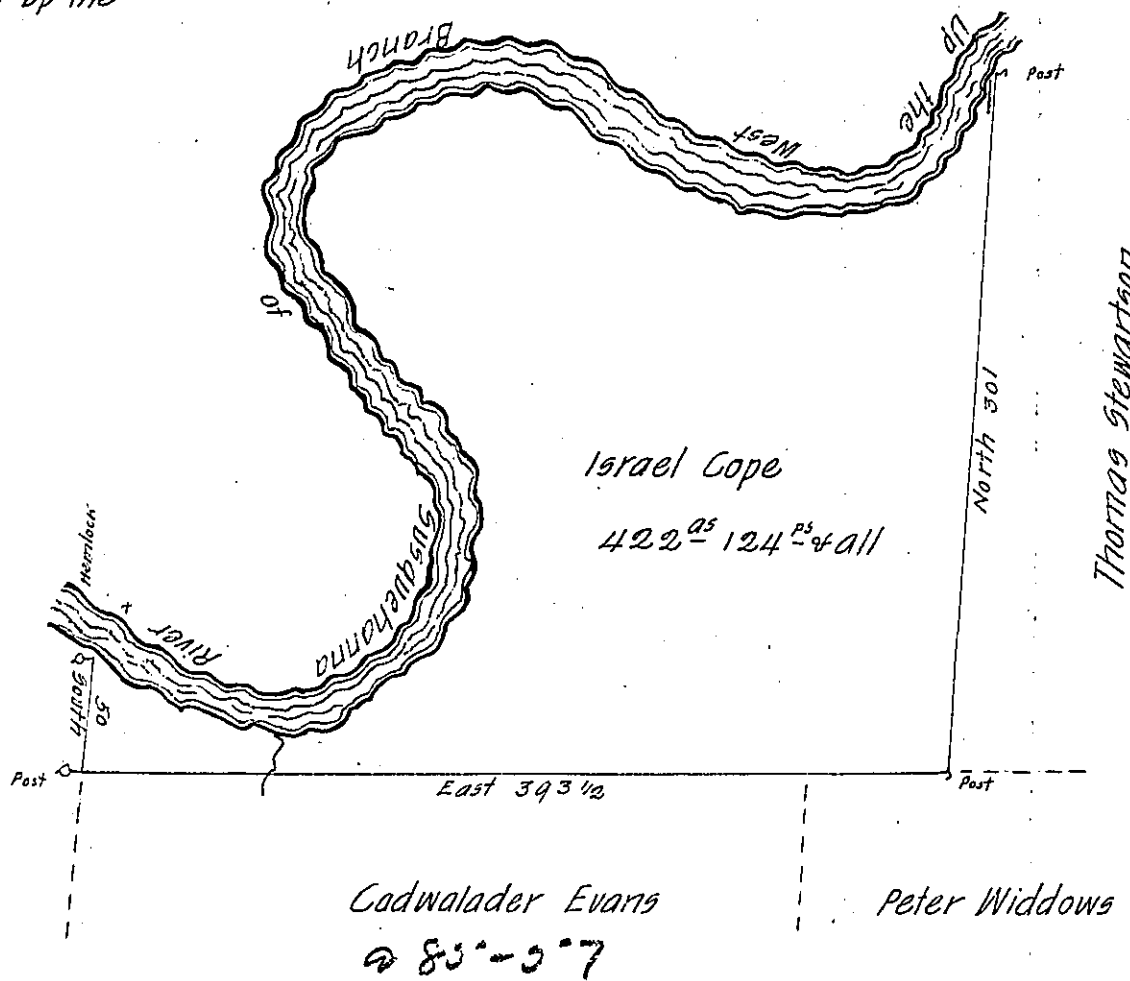
89 11

The courses and Distances up the River are as follows

- S. 9 W. 30
- S. 38 W. 34
- S. 71 W. 35
- N. 84 W. 56
- N. 70 W. 31 1/2
- N. 62 W. 65
- S. 89 W. 20
- S. 71 W. 18
- S. 64 W. 47
- S. 42 W. 15
- S. 2 W. 24
- S. 31 E. 54
- S. 46 E. 15
- S. 56 E. 35
- S. 27 E. 36
- S. 1 W. 34
- S. 22 W. 34
- S. 45 W. 51
- S. 75 W. 30
- N. 78 W. 62
- N. 60 W. 26

755

C-13896 Aaron Levy



Situate on the South side of the West Branch of the Susquehanna River about one Mile and a half above the Mouth of Deer Creek in Allegany Township Huntingdon County containing four hundred and twenty two Acres one hundred and twenty four Perches and the Usual Allowance for Roads.

Surveyed the 20th Day of April 1797 for Israel Cope, in pursuance of a Warrant dated the 15th Day of March 1797.

John Canan D. G.

Daniel Brodhead Esq^r S. G.

IN TESTIMONY that the above is a copy of the original remaining on file in the Department of Internal Affairs of Pennsylvania, made conformably to an Act of Assembly approved the 16th day of February, 1833, I have hereunto set my Hand and caused the Seal of said Department to be affixed at Harrisburg, this Sixth day of June 1904

Isaac D. Brown
Secretary of Internal Affairs.